

Halo Touchless Car Operating System

Installation guide

Steps 1 & 2 only apply if your Halo is being fitted to an existing car operating panel (COP) faceplate. Otherwise, please proceed to step 3.

Step 1: sensor location

Decide where to place Halo sensor, line up positioning guide on faceplate and use it to drill the fixing holes.

Note: the Halo sensor has a maximum range of 320mm in the X axis - do not mount sensor further than 320mm from pushbuttons.

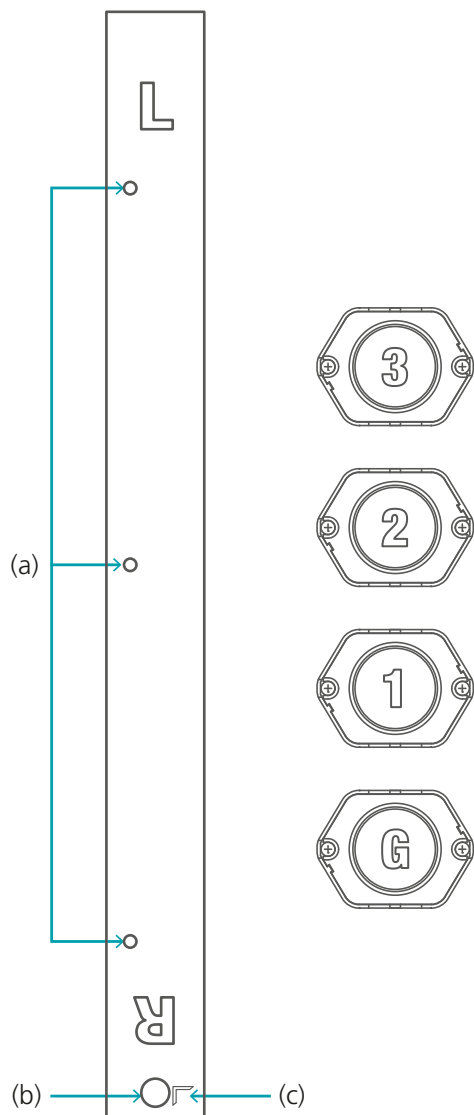
The metal positioning guide is the same footprint as the Halo unit. It can be used for left and right fitment, allowing for easy placement.

If the customer requires a symmetrical layout, we offer the option of installing two Halo units. The second unit will not contain a sensor and can be sold with the same print on the side, or without print.



Diagram (right):

- (a) Three drill guide holes for fixing (4mm).
- (b) Drill guide for 10.5mm hole, which is required to pass the sensor connector through.
- (c) Small laser-cut arrow: indicates where to begin your measurements. This will be known as the '0 point' of the X and Y axes.

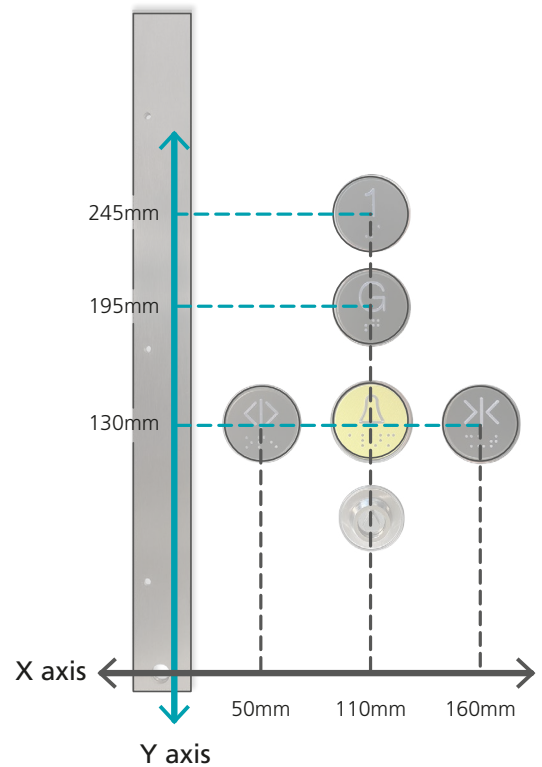


Step 2: measurements

Take button measurements & send to supplier for programming (see programming guide).

Use the laser cut arrow on the positioning guide as the 0 point of the X and Y axes. Measure from both axes to the centre of your buttons, as shown in the diagram. Using the table below as a guide, take measurements for all buttons and submit for programming (please download programming form).

Legend	X position	Y position	Button width	Button height
1	110mm	245mm	35mm	35mm
G	110mm	195mm	35mm	35mm
Close	160mm	130mm	35mm	35mm
Alarm	110mm	130mm	35mm	35mm
Open	50mm	130mm	35mm	35mm



You will not be able to proceed with the following steps until steps 1 & 2 have been completed and you have received your programmed Halo sensor.

Step 3: Halo attachment

Attach Halo sensor to the faceplate, with connector passing through the 10.5mm hole.

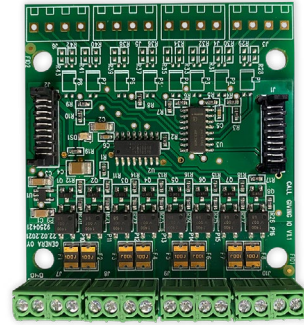


Step 4: CPU & 8 way call card attachment

Attach the CPU & 8 way call card to the rear of the COP faceplate.



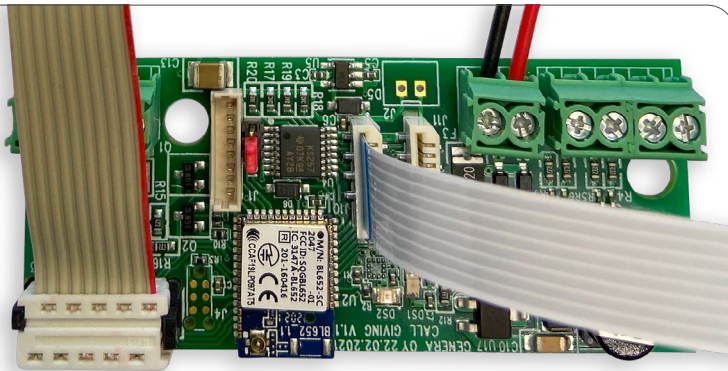
CPU board



8 way call card

Step 5: wiring

1



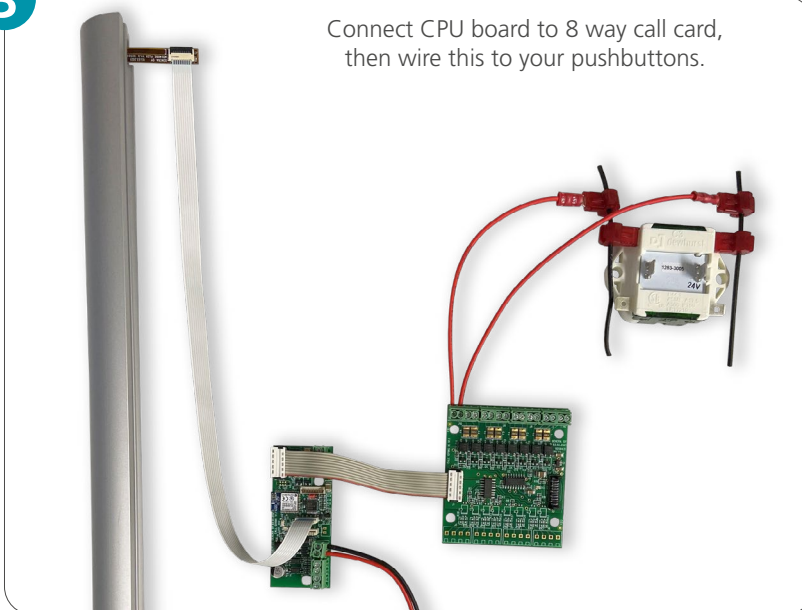
Insert ribbon cable into the CPU board as shown.
Please observe the orientation.

2



Insert ribbon cable into Halo sensor and close black tab.

3



Connect CPU board to 8 way call card,
then wire this to your pushbuttons.