

Shunt Boards for Compact 2 and Jumbo

Types Otis & Thyssen

Publication Number: PB129/0214

Application

To improve installation time when using Compact 2 or Jumbo buttons, Dewhurst have produced two shunt boards. These PCB boards plug in to a 2 N/O type Compact 2 body or a 1 N/O Jumbo body and provide the circuit and connector for that company's existing button. This allows the re-use of existing wiring and also reduces labour time when producing complete fixtures or during installation.

Technical Information

For use only on 2 N/O arrangement bodies (most buttons). The PCB circuit connects both contacts in parallel. Therefore the shunt boards cannot be used for alarm or other buttons with arrangement other than 2 N/O.

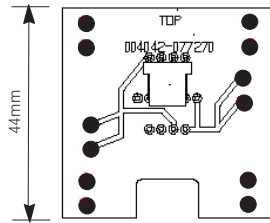
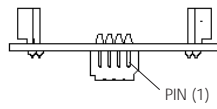
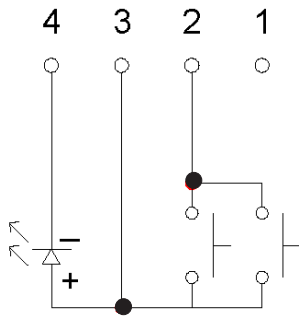
Single and dual illumination is possible. The shunt boards interfere with the dual illumination spades on the back of the standard Type 'A' illuminator boards. In order to allow dual illumination to be possible, we have created a Type 'B', (see Publication Number: PB123), which has two leads attached instead of spades.

Note: only 24V in all colours are available right now. For other arrangements, please contact Dewhurst.

Refer to PB134 for Shunt Boards for Compact2 - Schindler types.

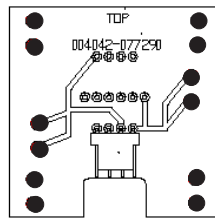
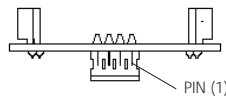
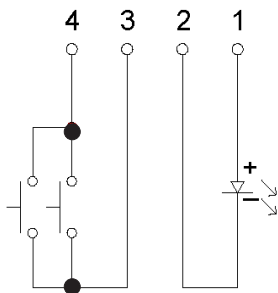
Refer to PB150 for Shunt Board for Jumbo when used with Relay Board (PB140)

OTIS (HE14)

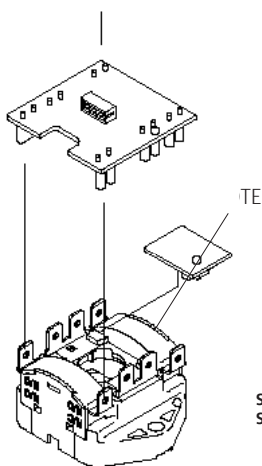


Part Number: **004042-077270**
(HE14 amp connector)

THYSSEN (MTA100)

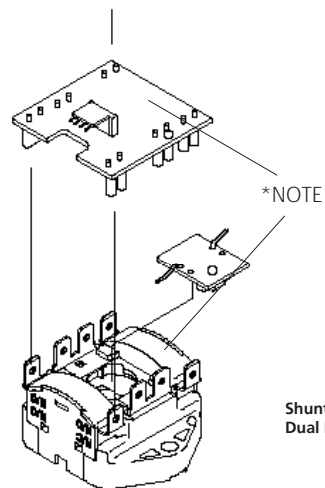


Part Number: **004042-077290**
(MTA100 connector)



EXAMPLES:

Shunt Board with
Single Illumination



Shunt Board with
Dual Illumination

*NOTE : PCB board must be plugged on to the body with the label (TOP) on PCB on the same side as the Dewhurst logo of the Compact 2 body.